



## MASUNG Printer Driver User manual

### Catalogue

How to install the driver?.....	1
Step 1.....	2
Step 2.....	2
Step 3.....	3
Step 4.....	3
Step 5.....	4
Step 6.....	4
Step 7.....	6
Step 8.....	6
Notice:.....	7
How to print a test-page via Driver.....	7
How to check which PC port connects with printer ?.....	9
How to choose the right port to connect?.....	11
How to print by user self-define paper size?.....	15
How to uninstall the driver completely.....	18

### How to install the driver?

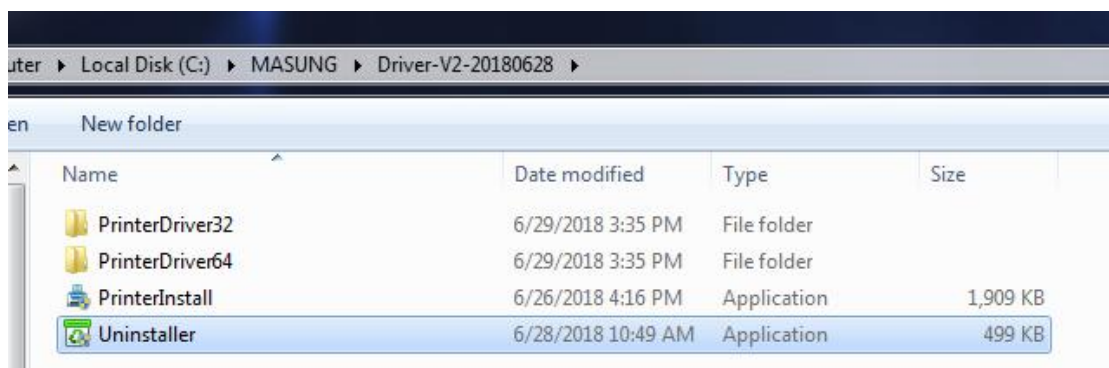
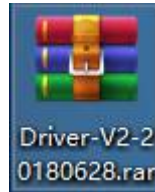
#### Warning:

Please do not place driver zip file on the PC desktop before installation.  
Please do not place driver zip file on any path or folder with blank or Chinese characters in name before installation.



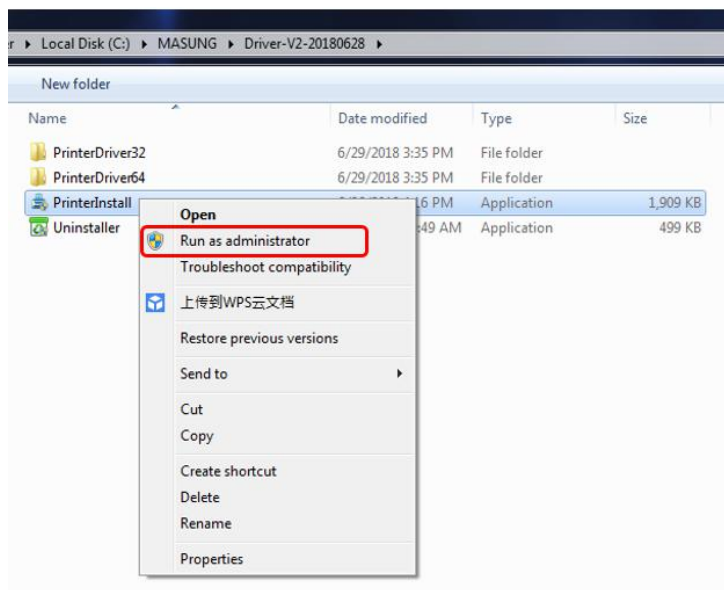
## Step 1

Open the driver file offered by MASUNG, as below



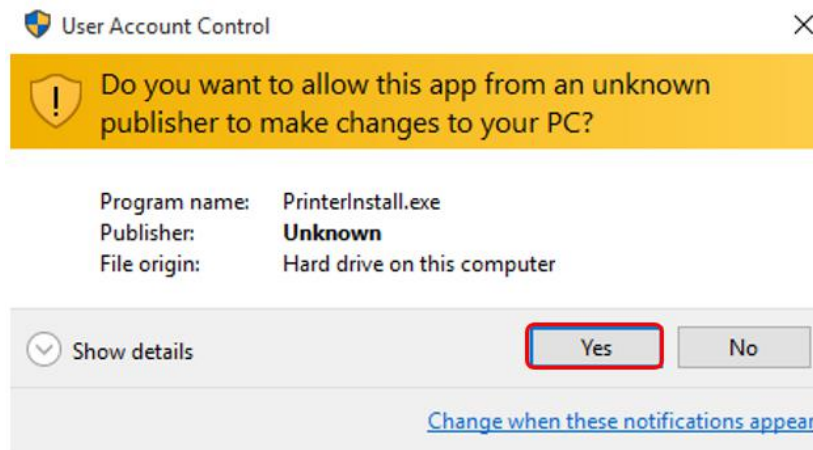
## Step 2

Run as administrator



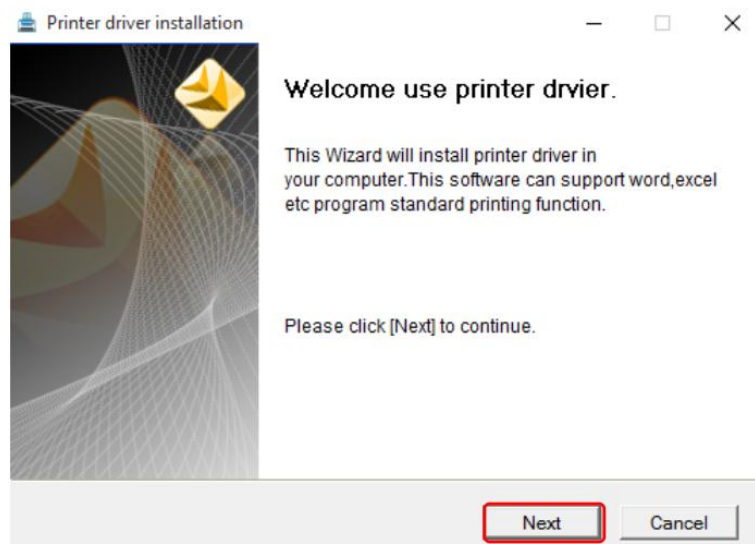
### Step 3

Choose [Yes] to continue



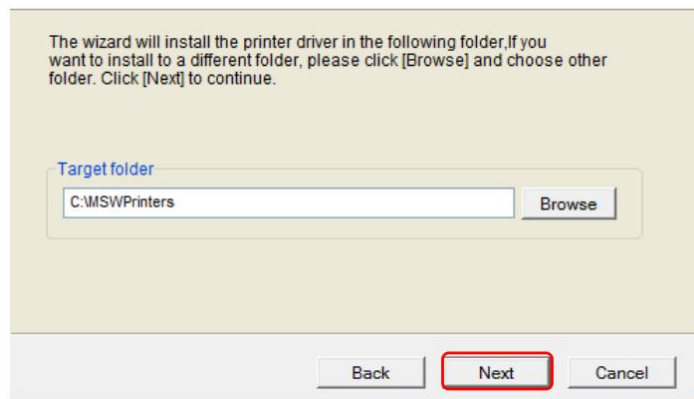
### Step 4

Click [Next] to continue



## Step 5

Click [Next] directly to continue, for install the driver by one time, you'd better not to change the path.



## Step 6

Choose printer model you used.

There are three kind paper width stands for different printer series.

1. W58(58mm) stands for printer supports 58mm width paper
2. W80(80mm) stands for printer supports 80mm width paper
3. W110(110mm) stands for printer supports 110mm width paper

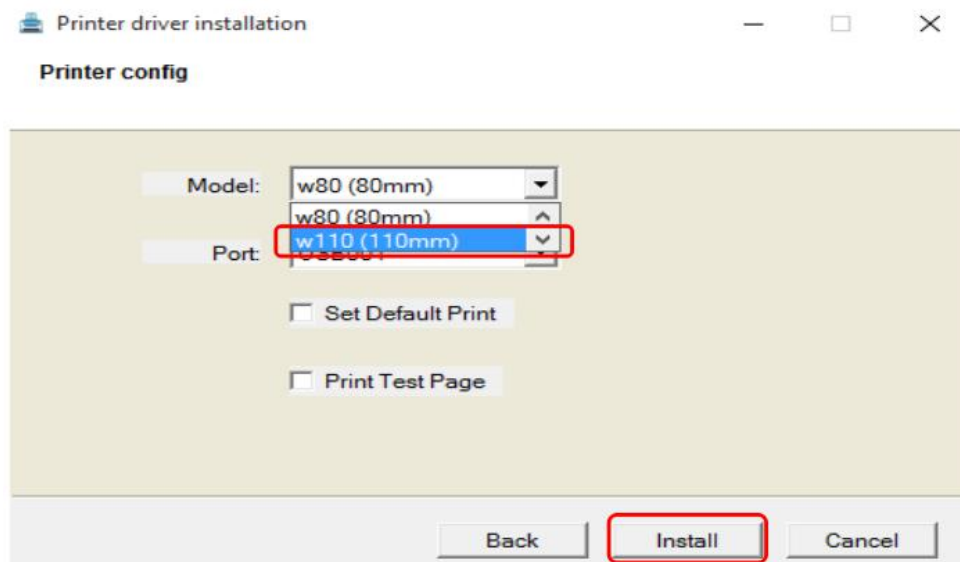
Printer model list for reference:

Paper width	Printer model	Auto cutter(Yes/No)
W58(58mm)	MSP-100	No
	MSP-100II	No
	MS-SP701	No
	MS-N58V series	Yes
	MS-D245	Yes



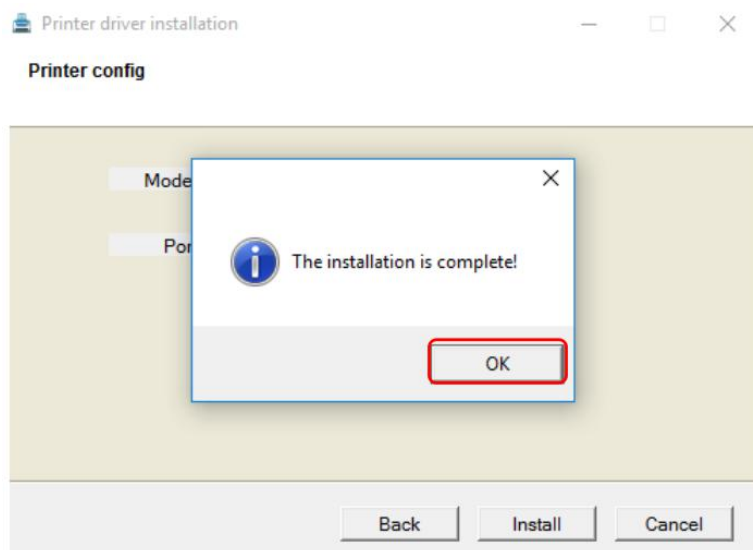
	MS-FPT201/201K	yes
	MS-LP212A/B	No
	EP5860I	Yes
W80(80mm)	MS-800S(IP-100)	Yes
	MS-T500II	Yes
	MS-530I	Yes
	MS-T840/T850	Yes
	MS-G530/T890	Yes
	MS-D347&D347-TL&TLP&BE	Yes
	MS-FPT301/301K	Yes
	EP802-TU/TM/TMP	Yes
W110(110mm)	MS-TS101	Yes

Here choose [w110(110mm)] as an example to demonstrate the installation procedure. Then click [Install] to continue.



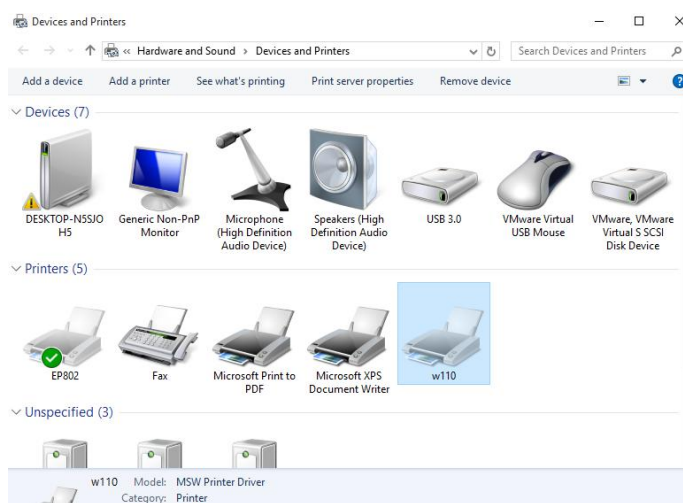
## Step 7

It will pop a window as below, it means the driver has been installed in PC successfully. Then click [OK] to finish the installation.



## Step 8

Enter into the **Devices and Printers** to see the installation result.



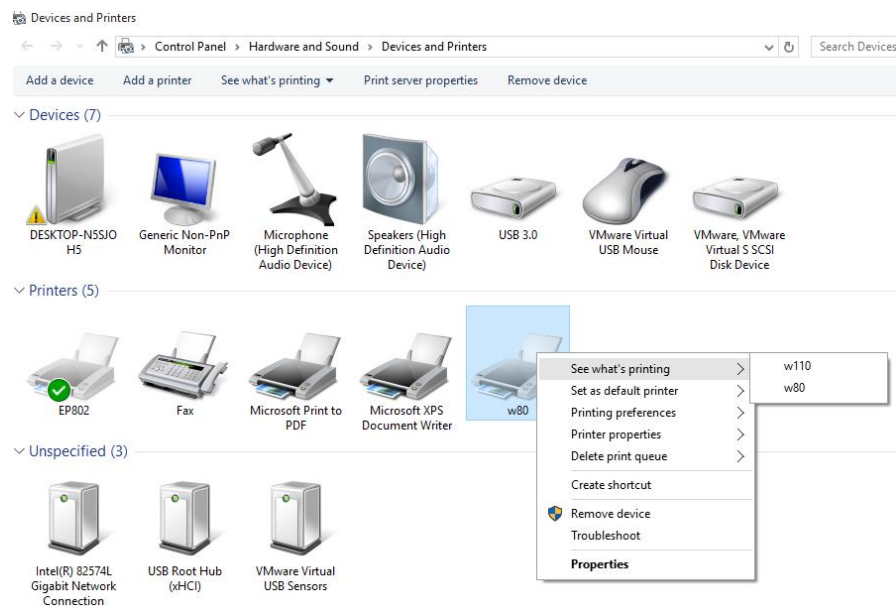


深圳市美松科技有限公司  
SHENZHEN MASUNG TECHNOLOGY CO., LTD

Tel: +86-755-23283616  
www.masungtek.com

## Notice:

If two or more width models have been installed, then you can see them in the **Devices and Printers** in the PC as below.



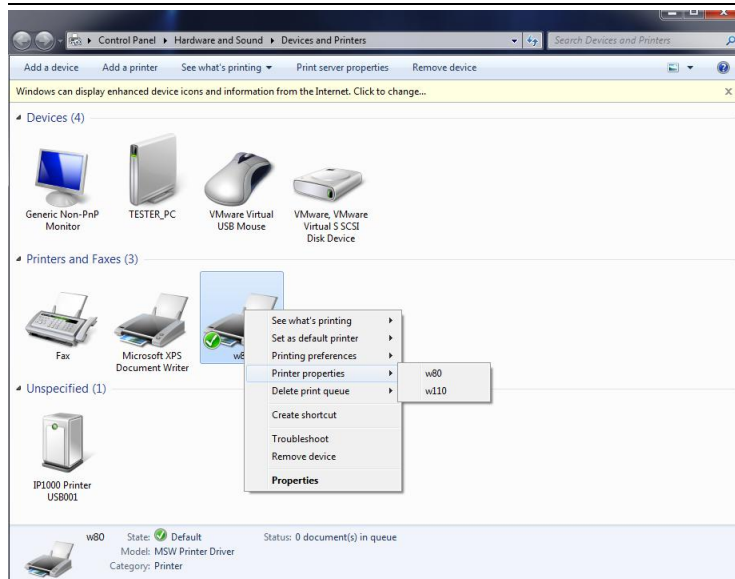
## How to print a test-page via Driver

Choose “w110” to view driver properties.

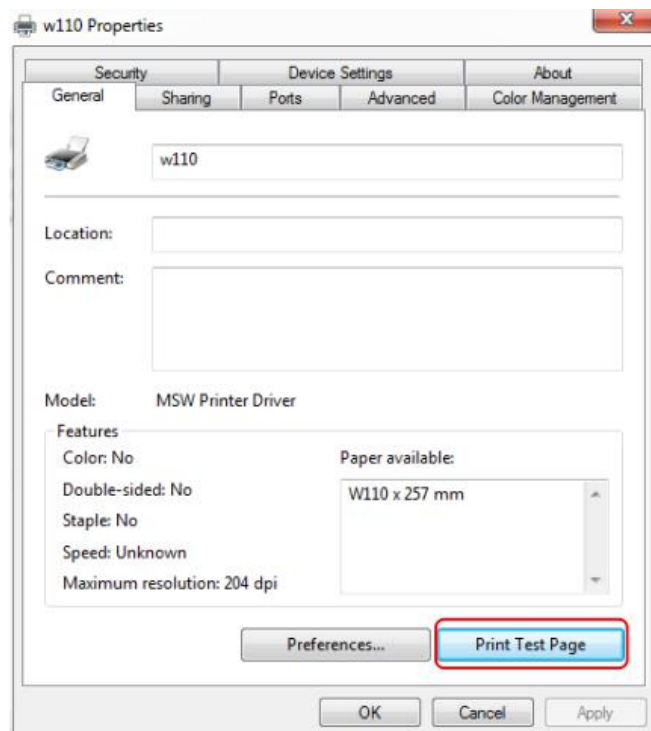


深圳市美松科技有限公司  
SHENZHEN MASUNG TECHNOLOGY CO., LTD

Tel: +86-755-23283616  
www.masungtek.com



Click [Print Test Page] to get a driver test-page.



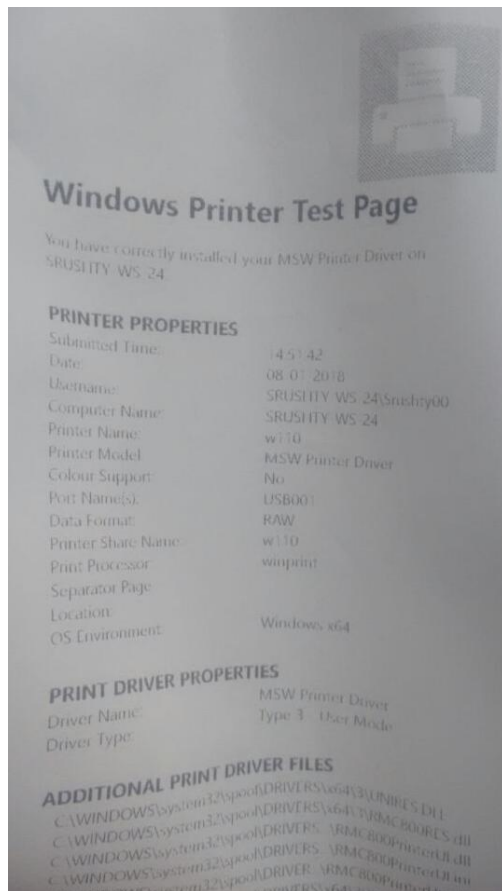
Picture as below:





深圳市美松科技有限公司  
SHENZHEN MASUNG TECHNOLOGY CO., LTD

Tel: +86-755-23283616  
www.masungtek.com



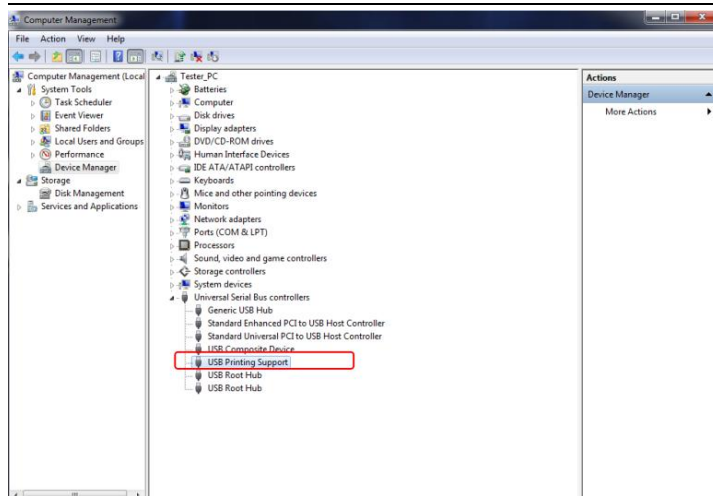
## How to check which PC port connects with printer ?

If the Driver has been installed successfully, and printer has connected, then PC device manager of “Universal Serial Bus controllers” list will show “USB printing Support” as below.

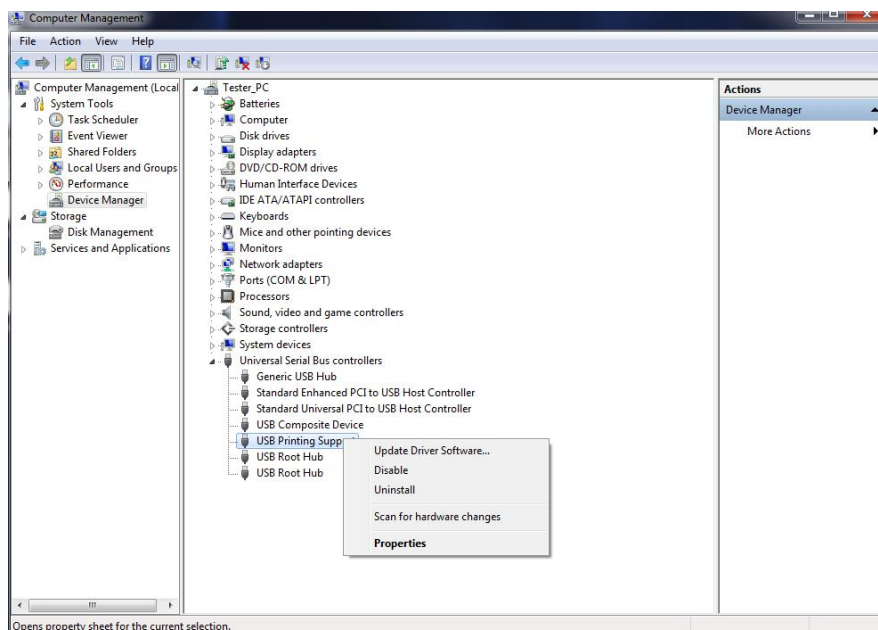


深圳市美松科技有限公司  
SHENZHEN MASUNG TECHNOLOGY CO., LTD

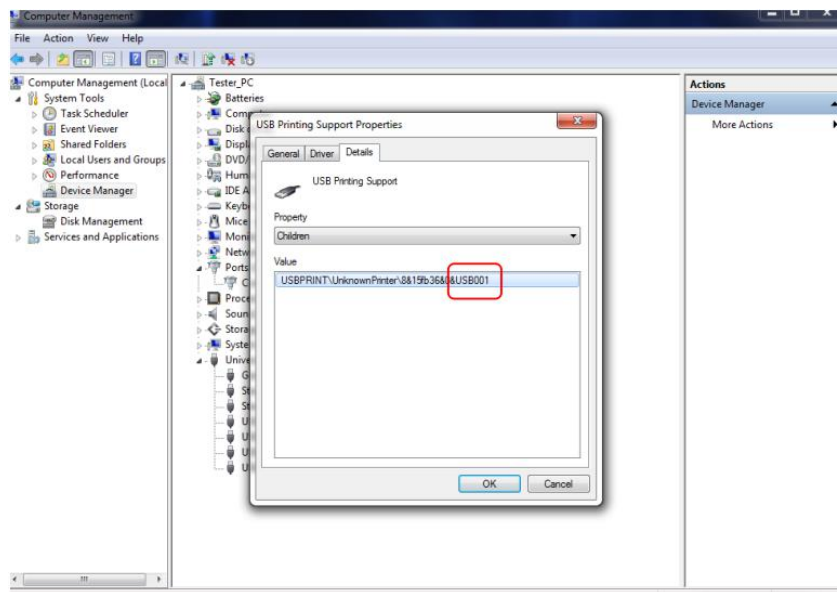
Tel: +86-755-23283616  
www.masungtek.com



Click [Properties] go to next interface.

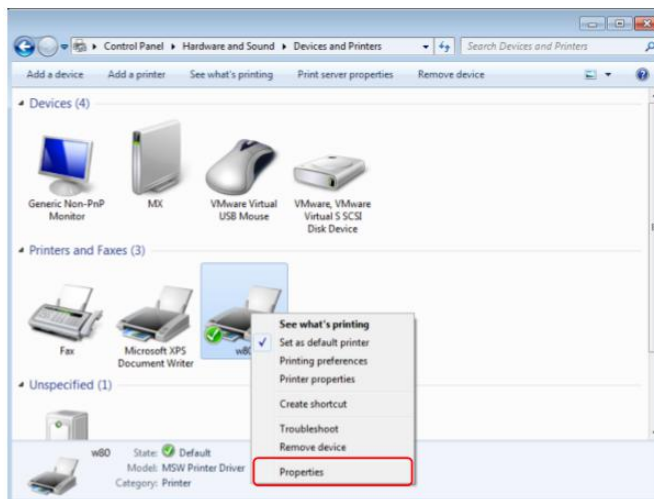


Choose the [Children] option to see the connected USB port.

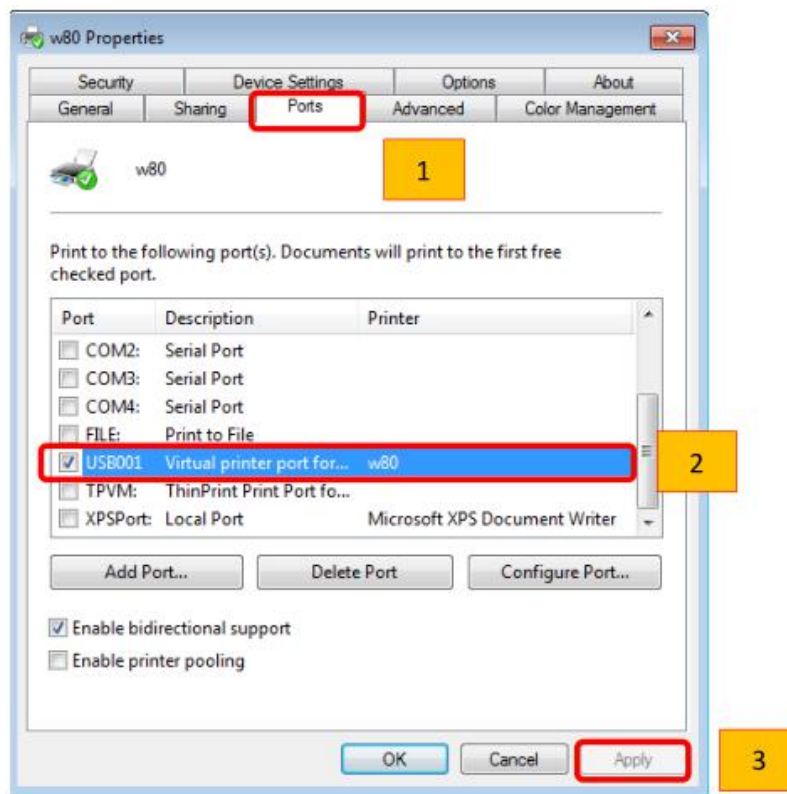


## How to choose the right port to connect?

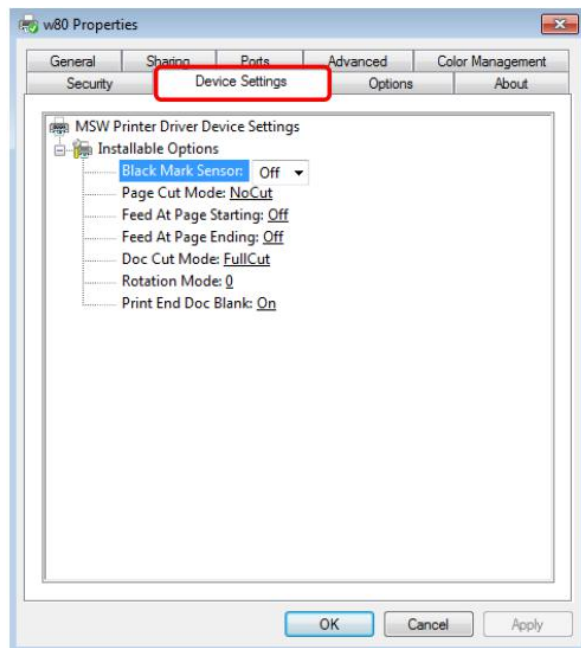
### 1. view driver properties



### 2. select PC port you want to use with printer. Then click “apply”



## How to set up driver configuration ?



Click the driver windows of " Device settings" ,User can set up below functions :

Black Mark Sensor : For black mark test

( Precondition: the printer by your hand equipped with blackmark sensor and it is in activated )

Page Cut Mode : for each page cutting mode

Page Cut Mode:	NoCut	▼
Feed At Page Start	NoCut	
Feed At Page End	PartCut	
Doc Cut Mode:	FullCut	

Paper presenter	Enable	★ ★ ★
	Disable	★ ★
Anti-Drag	Enable	★ ★
	Disable	★ ★ ★
Anti-Block	Enable	✓
	Disable	✓
Sticker	Enable	~
	Disable	★ ★ ★

Baud Rate	Enable	★ ★
	Disable	★ ★ ★
Black Mark Offset	0-1600	

Paper presenter	Enable	★ ★ ★
	Disable	★ ★
Anti-Drag	Enable	★ ★
	Disable	★ ★ ★
Anti-Block	Enable	✓
	Disable	✓
Sticker	Enable	~
	Disable	★ ★ ★

Printable Width	Enable	★ ★
	Disable	★ ★
Black Mark	Enable	★ ★ ★
	Disable	★ ★
Paper Near End	Enable	★ ★ ★
	Disable	★ ★
Baud Rate	Enable	★ ★
	Disable	★ ★ ★
Black Mark Offset	0-1600	
Paper presenter	Enable	★ ★ ★
	Disable	★ ★
Anti-Drag	Enable	★ ★
	Disable	★ ★ ★

Feed At Page Starting : Feed some blank at the beginning of page

Feed At Page Ending : Feed some blank at the ending of page

Feed At Page Starting:	20mm	▼
Feed At Page Ending:	13mm	▲
Doc Cut Mode:	FullCut	
Rotation Mode:	0	
Print End Doc Blank:	Off	

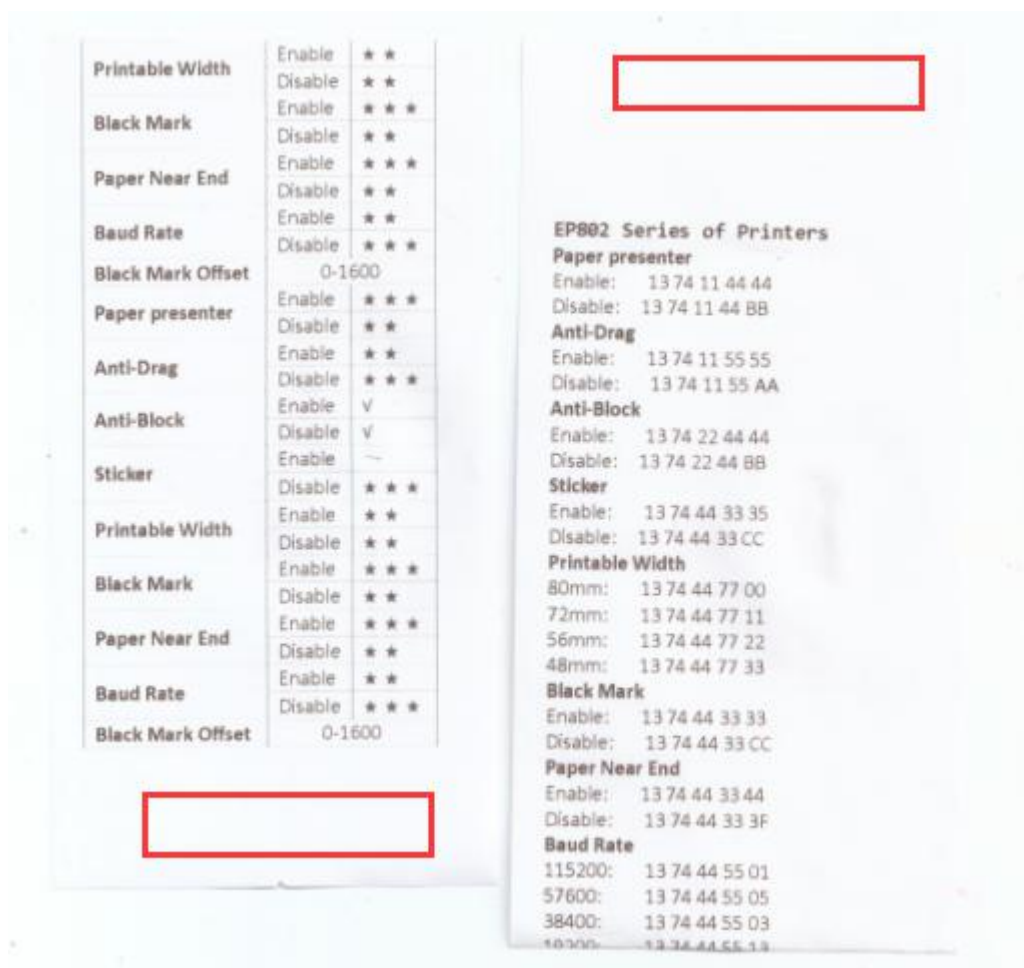
Feed At Page Ending:	23mm
	24mm
Doc Cut Mode:	FullCut
Rotation Mode:	0
Print End Doc Blank:	0





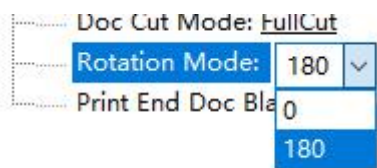
深圳市美松科技有限公司  
SHENZHEN MASUNG TECHNOLOGY CO., LTD

Tel: +86-755-23283616  
www.masungtek.com



Doc Cut Mode : Cut paper at the ending page of whole document

Rotation Mode : 0° /180°





深圳市美松科技有限公司  
SHENZHEN MASUNG TECHNOLOGY CO., LTD

Tel: +86-755-23283616  
www.masungtek.com

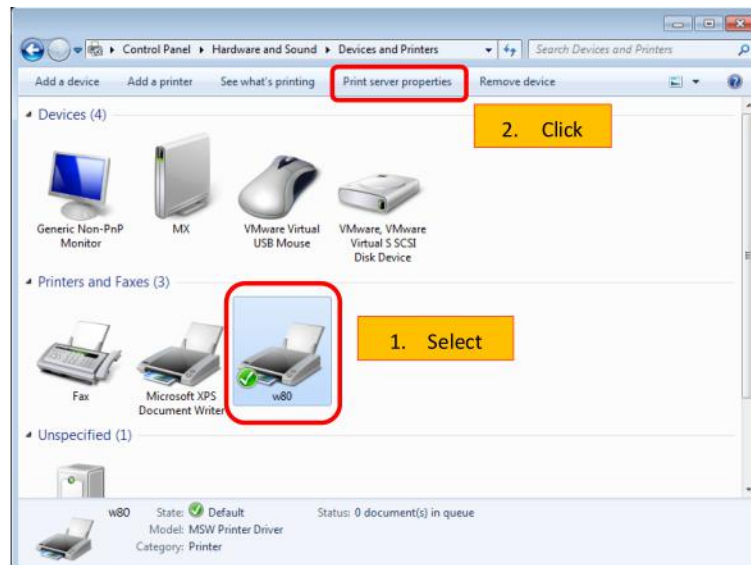


Print End Doc Blank : Feed some blank at the ending page of whole document

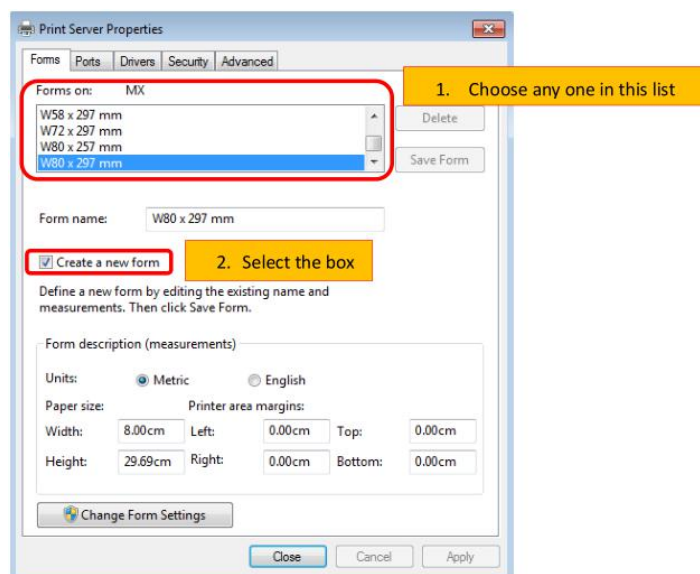
After choose each setting , please click on “apply”, then printer will work on new configured functions.

## How to print by user self-define paper size?

Click “Print server properties”



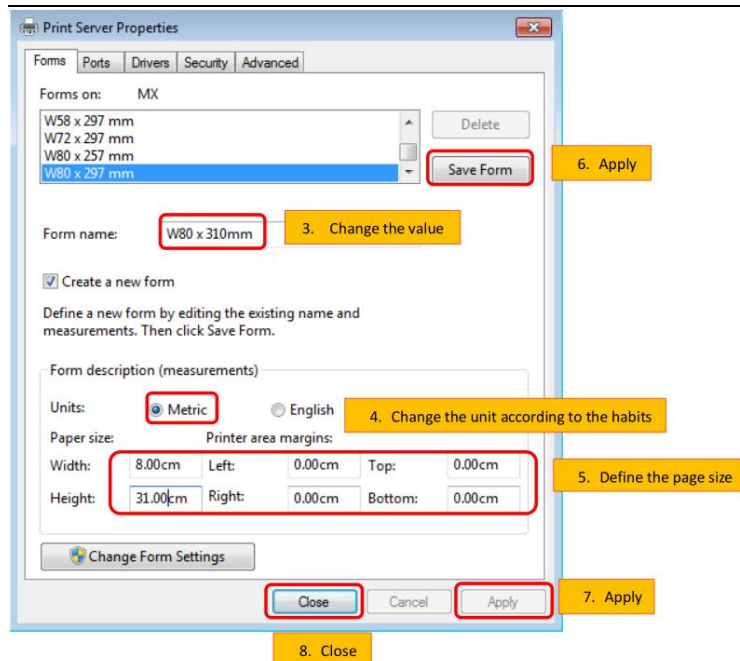
Select one form you used.



Change the width or length value as you want

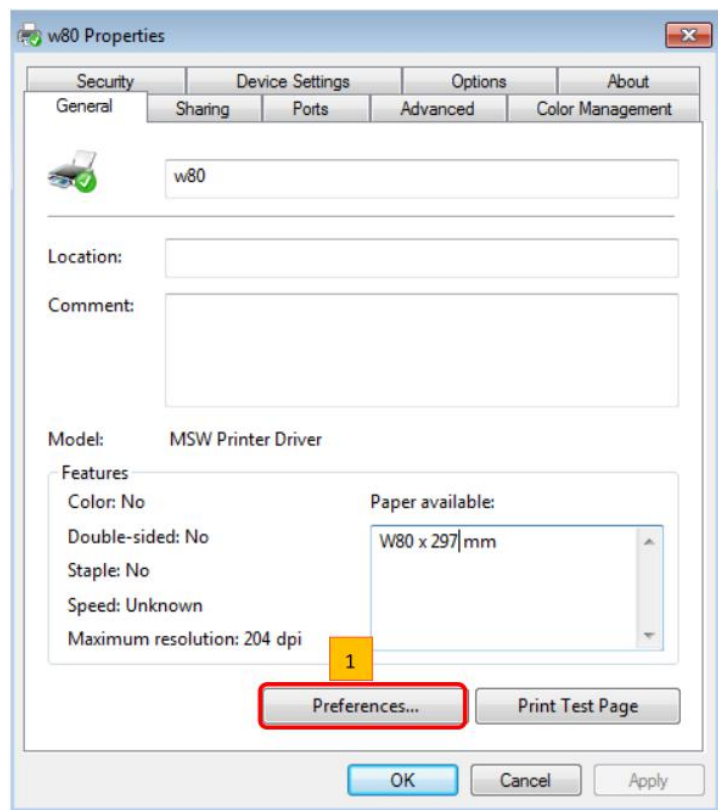
Notice: the maximum paper width should be supported by your printer.





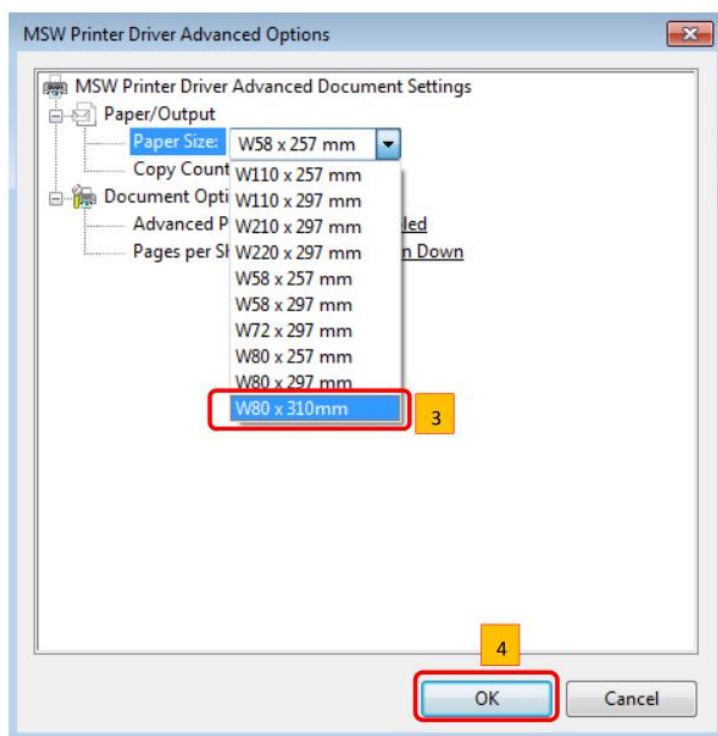
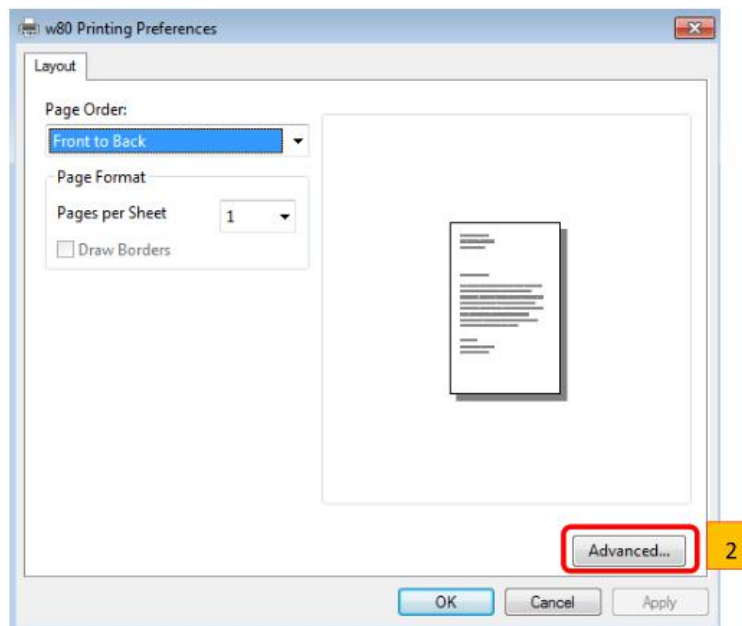
The image shows the 'Print Server Properties' dialog box with the 'Forms' tab selected. The 'Forms on:' list contains 'W58 x 297 mm', 'W72 x 297 mm', 'W80 x 257 mm', and 'W80 x 297 mm'. The 'W80 x 297 mm' form is selected. The 'Form name:' field is set to 'W80 x 310mm'. The 'Create a new form' checkbox is checked. The 'Form description (measurements)' section shows 'Units' set to 'Metric' and 'Paper size' set to 'W80 x 310mm'. The 'Printer area margins' are set to 0.00cm on all sides. The 'Close', 'Cancel', and 'Apply' buttons are highlighted with red boxes. Yellow callout boxes with numbers 3 through 8 provide instructions: 3. Change the value (pointing to the form name), 4. Change the unit according to the habits (pointing to the units), 5. Define the page size (pointing to the paper size), 6. Apply (pointing to the 'Save Form' button), 7. Apply (pointing to the 'Apply' button), and 8. Close (pointing to the 'Close' button).

Finally click on "Apply" after your setting. Then click "Preferences"



The image shows the 'w80 Properties' dialog box with the 'Advanced' tab selected. The 'Model' is set to 'MSW Printer Driver'. The 'Features' section shows 'Color: No', 'Double-sided: No', 'Staple: No', 'Speed: Unknown', and 'Maximum resolution: 204 dpi'. The 'Paper available:' list contains 'W80 x 297mm'. The 'Preferences...' button is highlighted with a red box and a yellow callout box with the number 1. The 'OK', 'Cancel', and 'Apply' buttons are at the bottom.

Click on "Advanced" and select your defined form to print.



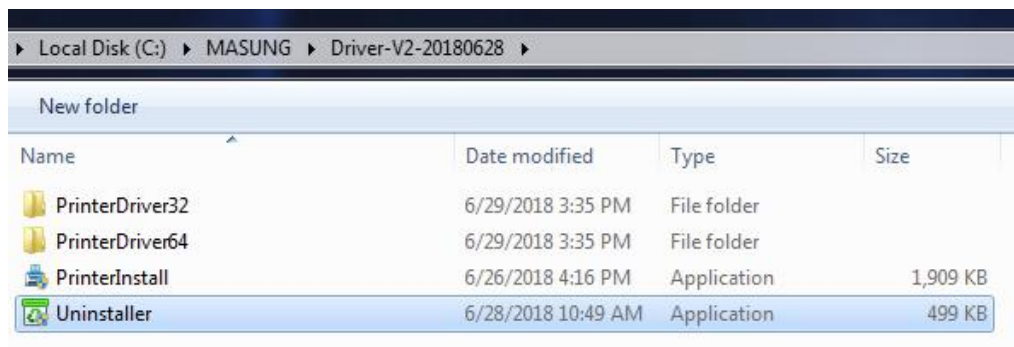
## How to uninstall the driver completely

1. Run "Uninstaller" as administrator

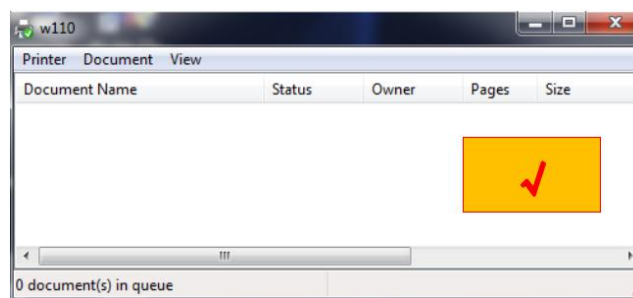
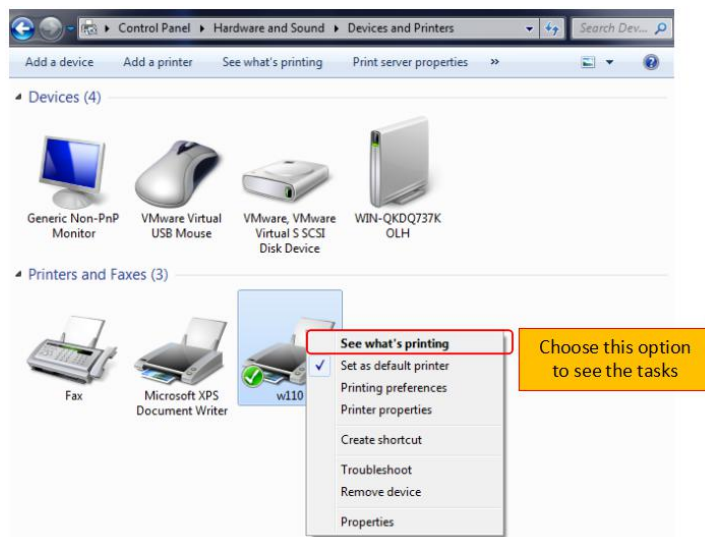


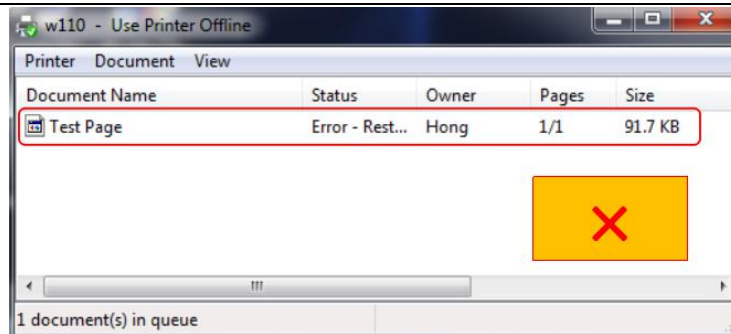
深圳市美松科技有限公司  
SHENZHEN MASUNG TECHNOLOGY CO., LTD

Tel: +86-755-23283616  
www.masungtek.com

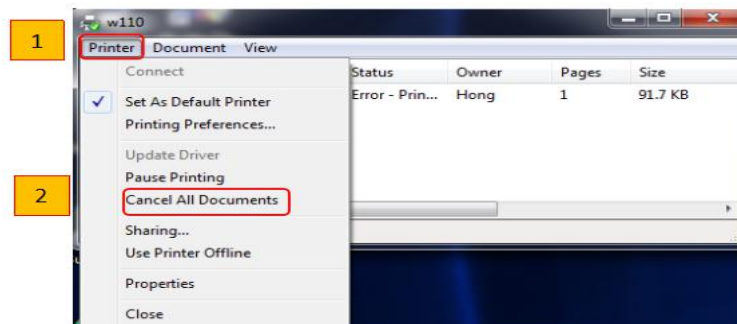


notice: Before run the Uninstaller, users should make sure there is no print task in the print queue, as below.

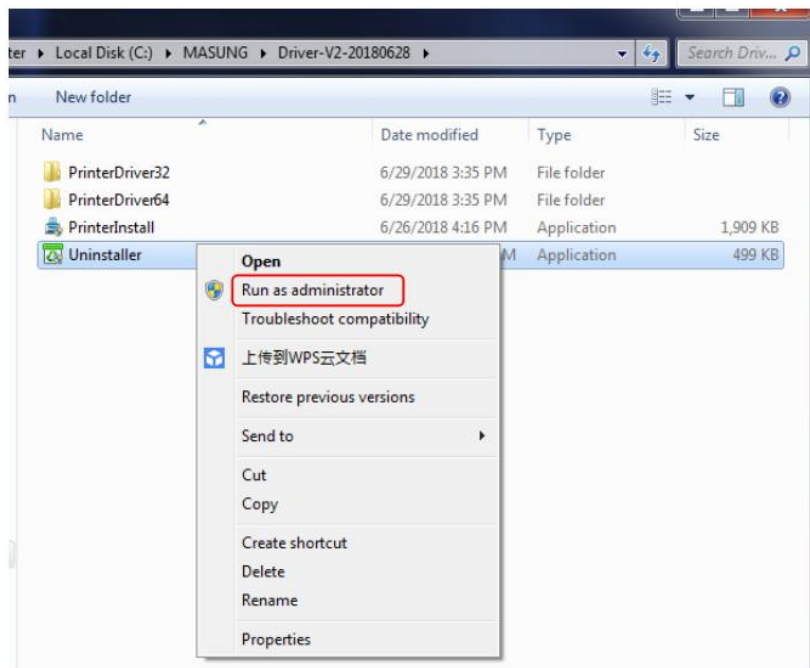




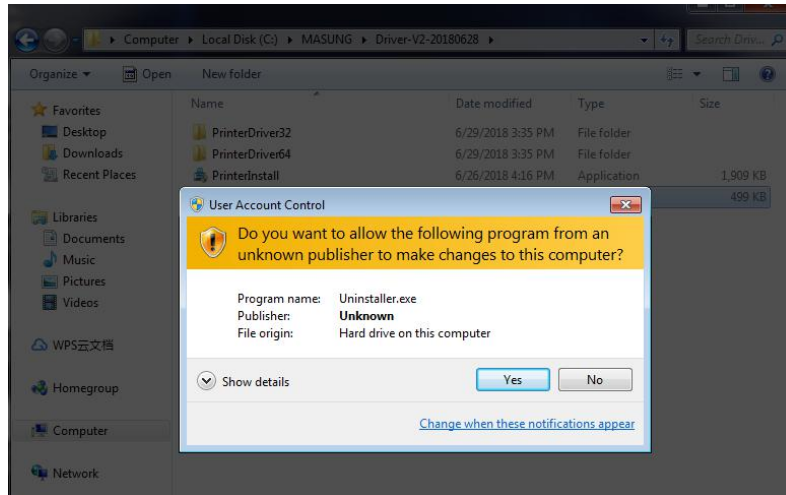
\*If there is some tasks or some error tasks, users can delete them as below



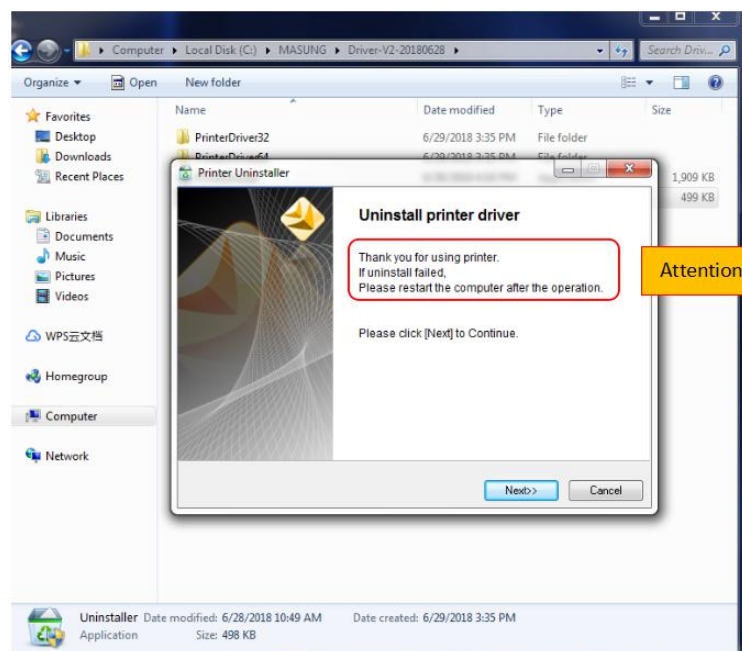
2. If users checked there is no tasks in the print queue, then please follow next steps.



3. Choose [Yes] to continue.



4. Choose [Next] to continue



Notice: If there pops window show failure as below, then click [Finish] to finish the uninstall operations, and restart PC directly then to process driver uninstallation procedure again.



深圳市美松科技有限公司  
SHENZHEN MASUNG TECHNOLOGY CO., LTD

Tel: +86-755-23283616  
www.masungtek.com

